



## A LETTER FROM THE CHAIR

Whether the gift is large or small, every donor has a story and each act of kindness plays a role in making this community a better place to live, work and play. As Chair of the Community Foundation, I have been privileged to see generous people in action, hear their stories and see the impact of their gifts. We accomplished a lot this year but there is much more work to do. To those of you who have supported us this year, I sincerely thank you. To those of you who are considering a gift or would like more information, I invite you to share your stories and dreams with us. We look forward to working with each and every one of you to create positive change in our community. On behalf of the board of trustees, members and staff, I thank all of you for your support and love for the Community Foundation of Greater Rochester.

*Smiley Gofrank*

Chairman of the Board

## OUR BOARD

The Community Foundation of Greater Rochester is a non-profit organization governed by local men and women who share their time, talent and treasure to make Greater Rochester even greater.

- |                  |                   |
|------------------|-------------------|
| Mark Aiello      | Jason Hoffmeyer   |
| Linda Bermingham | Robert Justin     |
| Ken Bilodeau     | Sal LaMendola     |
| Pat Botkin       | Mike Mackens      |
| David Bray       | Tom Mines         |
| Julie Byrd       | Ed Golick         |
| David de Steiger | John Schultz      |
| Shirley Gofrank  | Elizabeth Talbert |



*Never doubt that a small group of thoughtful, committed citizens can change the world. Indeed, it is the only thing that ever has.*

*- Margaret Mead*

## MISSION STATEMENT

The Community Foundation of Greater Rochester is committed to enhancing the quality of life for citizens in the Greater Rochester area by providing leadership in building community endowments and local grantmaking.

The Foundation serves as a catalyst for change, a partner with other local groups and a resource to provide solutions for current and emerging community needs.

© 2014 Community Foundation of Greater Rochester  
a 501(c)3 nonprofit organization  
303 East Street, Rochester MI 48307  
248.608.2804

[cfound.org](http://cfound.org)

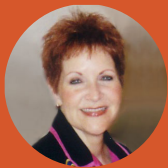


community foundation  
Greater Rochester

# WE'VE BEEN GIVING BACK SINCE 1983.

## 2013 Report





## BUILDING TOMORROW'S FUTURE TODAY

The Community Foundation of Greater Rochester was created to act as a steward of charitable resources. Our mission is to maximize returns on philanthropic investment in our community through long-term fiscal planning and effective utilization of available assets. Think of us as a financial manager for the causes that matter most in our community.

Since 1983, the Community Foundation has connected people who care with causes that matter. We provide long-term solutions and support to individuals and organizations working to improve our community, whether their focus is cultural, civic or social.

From investing in community projects to assisting individuals in need, we will always be **For Good. For Ever.**

*Peggy Hamilton*

Executive Director

## 2013 LIST OF OUR ACCOMPLISHMENTS

**800** thousand dollars in gifts received from 1,543 donors

**781** thousand dollars awarded in grants & scholarships

**7.8** million dollars in total assets of your community foundation

**9.5** million dollars historic grants & scholarships distributed

## WE WOULD LOVE YOUR HELP

- Donate
- Spread The Word
- Stay Informed

 Like us on Facebook!

 Visit us on [cfound.org](http://cfound.org)



## WHAT WE DO

### Special Projects

We provide support for projects such as Rotary Gateway Park, Veterans' Memorial Pointe, the Bicycle Velodrome in Bloomer Park and other locations that we can all enjoy.

### Scholarships

Investing in the future means investing in our students. Our Community Scholarship Program allows students to apply for scholarships using one common application and deadline. Approximately 75-100 scholarships are awarded annually.

### Special Events

We support local events including the Music in the Park Concert Series, the Annual Prayer Breakfast and the Festival of the Hills Fireworks Display. Events like these bring us together as a community and are made possible through the charitable funds at the Community Foundation, not tax dollars.

### Assistance Programs

As a community we have a responsibility to help those least able to look after themselves. We provide funding for Blessings in a Backpack, the A-OK Program, Sound the Alarm and other programs designed to help community members at no cost to the taxpayers.

### Capital Campaigns

The Community Foundation also supports large-scale capital campaigns in the Greater Rochester area. These campaigns include the restoration and preservation of local historic buildings such as the Dairy Barn and Calf Barn at the Rochester Hills Museum.

### Special Initiatives

The Community Foundation also provides for special initiatives such as The Women's Fund. The Women's Fund focuses on helping local women in need.

**The Community Foundation strives to support causes that unite us as a community.**